



Easy UPS 3S

10-40 kVA
208/220 V



Life Is On

Schneider
Electric

Business continuity made easy

The Schneider Electric Easy UPS 3S is an easy-to-install, easy-to-use, and easy-to-service 10-40 kVA (208V) 3-phase UPS ideal for small data centers, commercial buildings, non-IT, and light industrial applications.

The Easy UPS 3S supplies power stability with robust electrical specifications and long-lasting performance to ensure your business continuity. It is exceptionally easy to install, connect, operate, maintain, and service, making it ideal for a wide range of small and medium business applications. This EcoStruxure™ connected UPS features a wide operating temperature range and strong overload protection, all in a compact and lightweight footprint. Start-up service optimizes your system's performance, quality, and safety. The Easy UPS 3S is the easy choice for your business continuity in the data center or electrical room.



Easy

Simplify every step of the deployment process with the UPS that is easy to select, easy to install, easy to start up, and easy to use and service.



Competitive specifications

Enjoy high efficiency and protection against harsh environments with robust electrical specifications and ruggedizing features.



Robust and flexible design

Fault-tolerance and parallel options keep your site resilient.

Typical applications

- Small data centers
- Non-IT and light industrial applications
- Manufacturing facilities
- Telecommunication
- Commercial buildings
- Healthcare
- Transportation



Compact footprint

High density makes more room for your revenue-generating equipment.



EcoStruxure connected

Anytime, anywhere monitoring and service support via smartphone.



40 kVA Easy UPS 3S for internal batteries

Easy to install and start up

- Rolls into position quickly and easily
- Minimal footprint requirement with lightweight, compact form factor
- Straightforward installation
- Input, output, and bypass breakers are included
- Emergency Power Off (EPO) switch is included
- Easy Loop test verifies UPS performance before you connect your load, without the need for a load bank
- Aesthetic design blends well into your installation environment
- On-site start-up with Schneider Electric Field Service Representatives

Easy to use, connect, monitor, and manage

- User-friendly display interface supports easy configuration
- With the included Network Management Card, you can:
 - Monitor UPS status remotely through a web interface
 - Monitor and manage the UPS status and performance through EcoStruxure IT's cloud-based and on-premise software suites, or through SNMP integration to the Network Management System of your choice, bringing you peace of mind.
 - Manage buildings through the BACnet protocol for integration with Building Management Systems (BMSs)

Easy to expand

- Parallel up to 4 UPSs for capacity or redundancy

Easy to maintain

- Front and rear access for service
- Quickly and easily replace the dust filter conveniently located behind the front door
- Schneider Electric service team available to make service easy and improve uptime with proper maintenance of your UPS and batteries

Versatile

Easy UPS 3S is easy to adapt for your site requirements:

- Only pay for the options you need, with upgrade kits that enhance the resilience of the UPS
- Internal battery options
- Extended runtime with battery cabinets

Robust and competitive

- Up to 94% efficiency in double conversion mode
- Minimize your power losses and cooling requirements with up to unity power factor (kW=kVA)
- Protect your data center or electrical room with these fortifying features:
 - Embedded dust filter
 - Conformal coating
 - Operating temperature up to 104°F
 - Wide input voltage range

Options

- Dry contact card
- Cold start kit
- Parallel kit
- Parallel and unitary maintenance bypass panel
- Single unit maintenance bypass panel
- Modular battery cabinet
- Modular high-capacity battery string
- Kirk Key Kit



Dry contact card



Modular high-capacity battery string



Parallel maintenance bypass panel



Modular battery cabinet for extended runtime requirements

Easy UPS 3S for internal batteries



Easy UPS 3S
10-30 kVA UPS for
internal batteries

- Dimensions (H×W×D):
10-20 kVA: 55 x 15 x 38 inches
30 kVA: 44 x 15 x 41 inches
- Batteries: VRLA – internal
modular battery strings
- IP level: IP20



Easy UPS 3S
40 kVA UPS for
internal batteries

- Dimensions (H×W×D):
55 x 20 x 43 inches
- Batteries: VRLA – internal
modular battery strings
- IP level: IP20



Easy Monitoring, Management, and Services

EcoStruxure IT enables resilient, secure, and sustainable data centers and IT environments

Schneider Electric's comprehensive Data Center Infrastructure Management (DCIM) solution, EcoStruxure IT, ensures business continuity by enabling secure monitoring, management, insights, planning, and modeling — whether from a single IT rack to hyper-scale IT — on-premises, in the cloud, and at the edge.

With the included Network Management Card, you can deploy EcoStruxure IT software and services to enhance monitoring and management of your Easy UPS 3S UPS.



Resilient



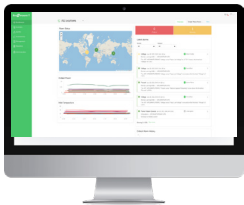
Secure



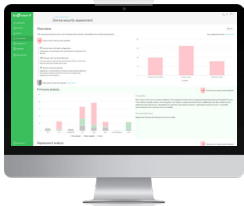
Sustainable

Easy visibility

Monitoring and management software that streamlines data center device management:



EcoStruxure IT Expert provides you a hands-on approach with cloud-based monitoring software that synthesizes and analyzes performance and alert data into proactive recommendations and enables wherever-you-go visibility from any device.



EcoStruxure Data Center Expert is a scalable end-to-end on-premise monitoring software that collects, organizes, and distributes critical device information, providing a comprehensive view of your company-wide multi-vendor physical infrastructure.

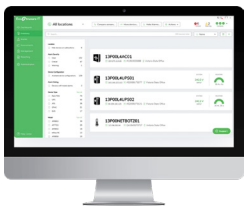
24/7 peace of mind



Digital services proactively monitor your critical devices:

EcoStruxure Asset Advisor* for secure power and cooling provides you a hands-off approach with 24/7 remote monitoring service by the Schneider Electric Connected Services Hub experts.

We monitor and troubleshoot, you relax.



Optimized operations

Planning and modeling software transforms data into performance insights:

EcoStruxure IT Advisor is a data center infrastructure planning and modeling solution that provides Data Center Managers in large enterprises and colocation data centers with full insights into their infrastructure to improve profitability, sustainability, and resiliency.

Comprehensive on-site services

Start-up service

- Commission the installation in accordance with manufacturer's recommendations. Ensure optimal system performance from Day 1.

Schneider Electric-certified installation services

- Expert configuration of your equipment for optimal performance and reliability.

Maintenance services

- Ensure proper care of your mission-critical applications.
- Preventive maintenance and response time upgrades, where available.

Flexible service plans / on-site extended warranty

- Hassle-free system maintenance.
- Improve uptime at a predictable cost.

Easy UPS 3S technical specifications

| Rated Power (kVA/kW) | | | | | |
|---|---|-------------------------------------|-------------------------------------|-------------------------------------|-------------------------------------|
| | 10/10 | 15/15 | 20/20 | 30/30 | 40/40 |
| Input | | | | | |
| Input voltage (V) | 208/220 V (3-phase + neutral + ground) | | | | |
| Frequency (Hz) | 40-70 Hz | | | | |
| Input power factor | >0.99 at loads >75% | | | | |
| THDI | ≤4% at 100% linear load (symmetrical) | | | | |
| Input voltage range | 176-253 V at full load | | | | |
| Dual mains input | Yes (default: single mains input) | | | | |
| Output | | | | | |
| Nominal output voltage (V) | 208/220 V | | | | |
| Efficiency: Double conversion mode | Up to 94% | | | | |
| Efficiency: ECO mode | Up to 98% | | | | |
| Overload capacity in normal operation | 125% for 10 minutes and 150% for 1 minute | | | | |
| Output voltage tolerance | +/-1% | | | | |
| Communication and management | | | | | |
| Communication interface | RS485, dry contacts, Ethernet (SNMP, Modbus, TCP/IP, BACnet) | | | | |
| Control panel | Multi-function LCD, status and display console | | | | |
| Weights and dimensions | | | | | |
| UPS for internal batteries, without batteries, unpackaged, shipping dimensions (H x W x D in) | 55 x 15 x 38 in / 63 x 31.5 x 47 in | 55 x 15 x 38 in / 63 x 31.5 x 47 in | 55 x 15 x 38 in / 63 x 31.5 x 47 in | 44 x 15 x 41 in / 63 x 31.5 x 47 in | 55 x 20 x 43 in / 63 x 31.5 x 47 in |
| UPS for internal batteries, without batteries, unpackaged/shipping weight (lb) | 265 / 335 | 291/364 | 291/364 | 342/414 | 412/485 |
| Battery string (1 string/2 modules), unpackaged/shipping weight (lb) | 60 lb per module | | | | |
| Regulatory | | | | | |
| Safety | UL 1778:2014 5th Edition, CSA C22.2 No. 107.3-14 | | Performance | IEC 62040-3 | |
| EMC/EMI/RFI | FCC Part15 Subpart B / ANSI C63.4 2014 | | Environmental | IEC 62040-4 | |
| Markings | cTUVus, FCC | | | | |
| Battery type | | | | | |
| Battery type | VRLA | | | | |
| Nominal DC bus (100% load) | +/- 120 Vdc | | | | |
| Charging power in % of output power (selectable) | 1-15% | | | | |
| Environmental | | | | | |
| Operating temperature | 32-104°F | | | | |
| Relative humidity | 0 to 95% non-condensing | | | | |
| Operating elevation | 0 to 1,000 m at 100% load | | | | |
| Audible noise at 1 m from unit | 10 kVA: ≤65 dBA at 100% load; 15-30 kVA: ≤68 dBA at 100% load; 40 kVA: ≤70 dBA at 100% load | | | | |
| Protection class | IP20 | | | | |
| Warranty | One year with Schneider Electric-certified Field Service Representative Start-up Service | | | | |



Life Is On



To learn more about the Easy UPS 3S uninterruptible power supplies and EcoStruxure IT, contact your Schneider Electric representative or visit se.com/ups.

For technical support, spare parts, and service scheduling, please contact the Customer Care Center at 800-438-7373.

About Schneider Electric

Schneider's purpose is to empower all to make the most of our energy and resources, bridging progress and sustainability for all. We call this Life Is On.

Our mission is to be your digital partner for Sustainability and Efficiency.

We drive digital transformation by integrating world-leading process and energy technologies, end-point to cloud connecting products, controls, software and services, across the entire lifecycle, enabling integrated company management, for homes, buildings, data centers, infrastructure, and industries.

We are the most local of global companies. We are advocates of open standards and partnership ecosystems that are passionate about our shared Meaningful Purpose, Inclusive and Empowered values.

OCT 2023

©2023 Schneider Electric. All Rights Reserved. Life Is On Schneider Electric is a trademark and the property of Schneider Electric SE, its subsidiaries and affiliated companies. All other trademarks are the property of their respective owners.

998-21202068_LMA-US